

# Keeping Adults Safe in Shropshire Board Update

*Health and Adult Social Care  
Scrutiny Committee*

# The structure of the Keeping Adults Safe in Shropshire Board



**Keeping Adults Safe in Shropshire Board**

**Executive Group**

**Sub-Groups** (Learning & Development, Audit & Performance and Safeguarding Adult Reviews (to be established with LCSB))

**Task and finish Groups**



- Progress so far
  - Plan produced from development day
    - Board members
  - Consultation event
    - Wider attendance
    - Amended and signed off
    - Complies with statutory duty
    - Any views of priorities?
  - Business Plan
    - Sub-group to populate

- Referral/concern activity
  - Where we were in 2013/14
    - no. of referrals - 497
  - Where we were in 2014/15
    - no. of referrals - 417
  - Where we are now in 2015/16 since the Care Act
    - no. of concerns – 816 in six months

- **Audit and Performance Sub-Group**
  - There will be regular reporting to the Board incl. examination of exceptions
- **Audit programme**
  - 3 tier approach in development incl. multi-agency themed case file audit
- **Performance scorecard**
  - In development
  - Multi-agency in nature

- **Management Information**
  - To include monitoring the no. of concerns raised, who is being asked to undertake enquiries and what is happening to those not going to enquiry
- **Performance Indicators**
  - To include timeliness of our responses, the reduction in the level of risk and consultation with the adult affected
- **Consultation with DMT**

# The adult needs to be aware that you are raising a concern

**1) Does  
the adult  
want to  
raise the  
concern?**

**2) Do they  
need  
support to  
do this?**

**3) Do they  
want it to  
be raised  
on their  
behalf?**

If they have  
answered no to  
these questions  
is there a  
public or vital  
interest that  
means the  
concern needs  
to be raised  
anyway?

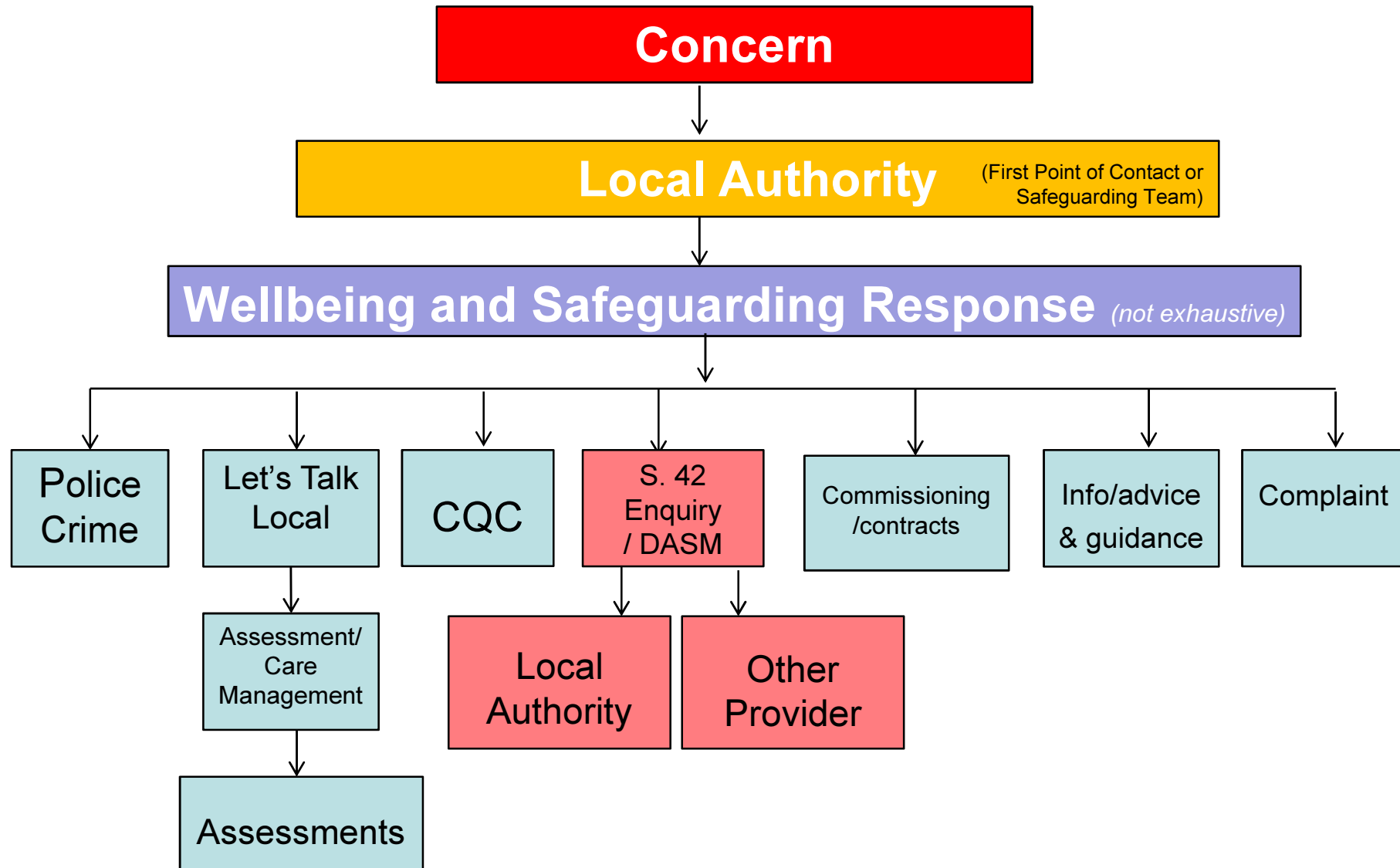
**Unless risk to them or others**

It is not a substitute for:

- Provider responsibilities
- Commissioner responsibilities
- CQC and compliance with fundamental standards
- Duties of Police and other statutory investigators



# Safeguarding Practice in Shropshire – what does it look like now?





Domestic abuse

Fire Safety

Child Safeguarding

Hate Crime

Prevent

Trading Standards

Anti – social Behaviour

MARAC – Multi Agency Risk Assessment Conference

MAPPA (Multi- agency public protection arrangements)

Sexual Assault Referral Centre